

Queen Street

Maidenhead • • SL6 1NF

PCM: £1,425 PCM



coopers
est 1986

Queen Street

Maidenhead • • SL6 1NF

Situated in the heart of Maidenhead, the renowned Berkshire House offers a stunning fully furnished studio apartment on Queen Street, available now. Residents can also enjoy a spacious communal area on the top floor with breathtaking views of the surroundings.

Available Now

Fully Furnished

Communal Areas

6 Minutes Walk to Elizabeth Line

Studio Apartment

£105 per month competitive utilities

Pet Friendly

24 Hour On Site Team

Prime Location for Commuters

Parking Available Additional £100 per Month

These particulars are intended as a guide and must not be relied upon as statements of fact. Your attention is drawn to the Important Notice on the last page.





Situated in the heart of Maidenhead, the renowned Berkshire House offers a stunning fully furnished studio apartment on Queen Street, available now. Residents can also enjoy a spacious communal area on the top floor with breathtaking views of the surrounding area.





Schools:

St Luke's CofE Primary School 0.3 miles
RBWM Alternative Learning Provision 0.3 miles



Train:

Maidenhead Station 0.4 miles
Furze Platt Station 0.8 miles
Taplow Station 1.6 miles



Car:

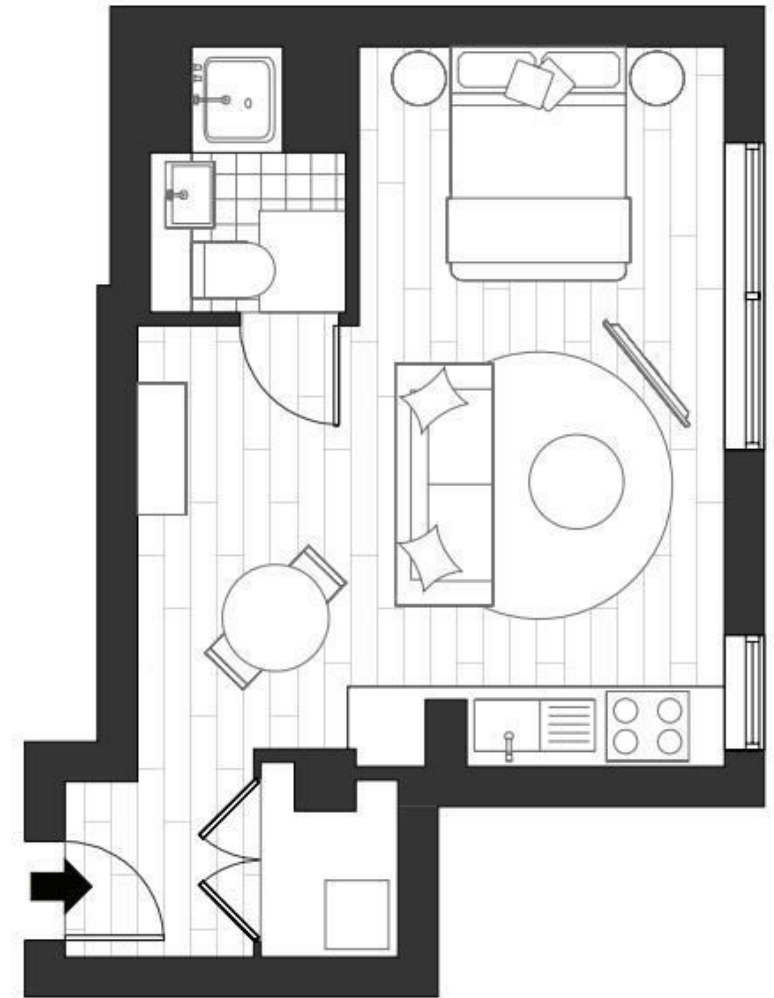
M4, A40, M25, M40



Council Tax Band:

A

(Distances are straight line measurements from centre of postcode)



01628 232 550
42 Queen Street, Maidenhead,
, SL6 1HZ
maidenhead@coopersresidential.co.uk

CoopersResidential.co.uk

| Energy Efficiency Rating | | Current | Target |
|--|---|---------|--------|
| Very energy efficient - lower running costs | A | | |
| Energy efficient - lower running costs | B | | |
| Decent energy efficiency - lower running costs | C | 82 | 82 |
| Some energy efficiency - lower running costs | D | | |
| Not very energy efficient - higher running costs | E | | |
| Very poor energy efficiency - higher running costs | F | | |
| Not energy efficient - higher running costs | G | | |

England & Wales
EPC Directive 2002/91/EC

Important Notice: These particulars, whilst believed to be accurate are set out as a general outline only for guidance and do not constitute any part of an offer or contract. Intending purchasers should not rely on them as statements or representation of fact, but must satisfy themselves by inspection or otherwise has the authority to make or give any representation or warranty in respect of the property.